

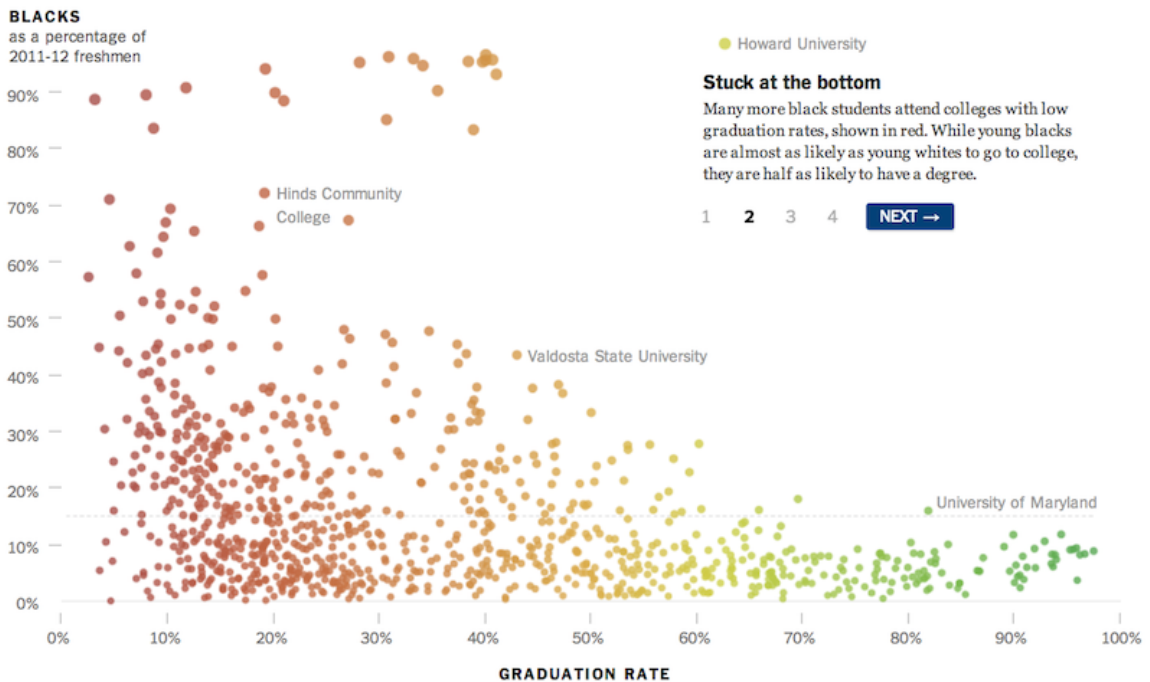
Feb 24, 2016

Group One

Published: May 7, 2013

FACEBOOK TWITTER GOOGLE+ EMAIL SHARE

At Top Colleges, an Admissions Gap for Minorities

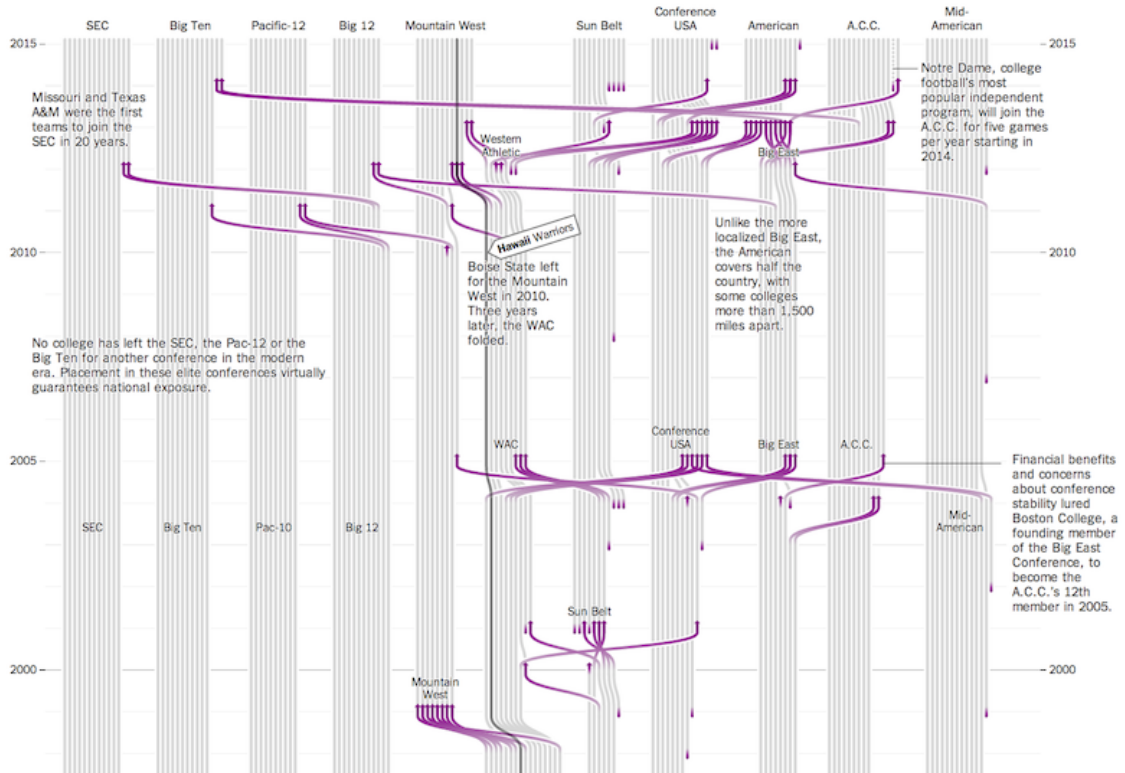


1. What variables constitute the frame?
2. What glyphs are used?
3. What are the aesthetics for those glyphs?
4. Which variable is mapped to each aesthetic?
5. Which variable, if any, is used for faceting?
6. Which scales are displayed with a guide?

Major college football programs since 1965

Schools switching conferences are highlighted

Select a team to highlight.



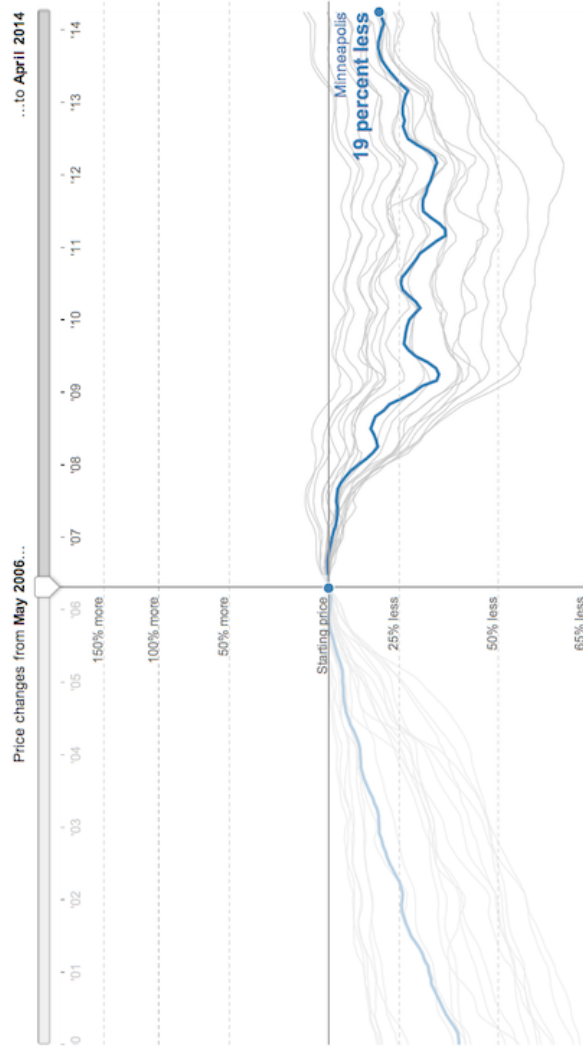
1. What variables constitute the frame?
2. What glyphs are used?
3. What are the aesthetics for those glyphs?
4. Which variable is mapped to each aesthetic?
5. Which variable, if any, is used for faceting?
6. Which scales are displayed with a guide?

BUSINESS DAY

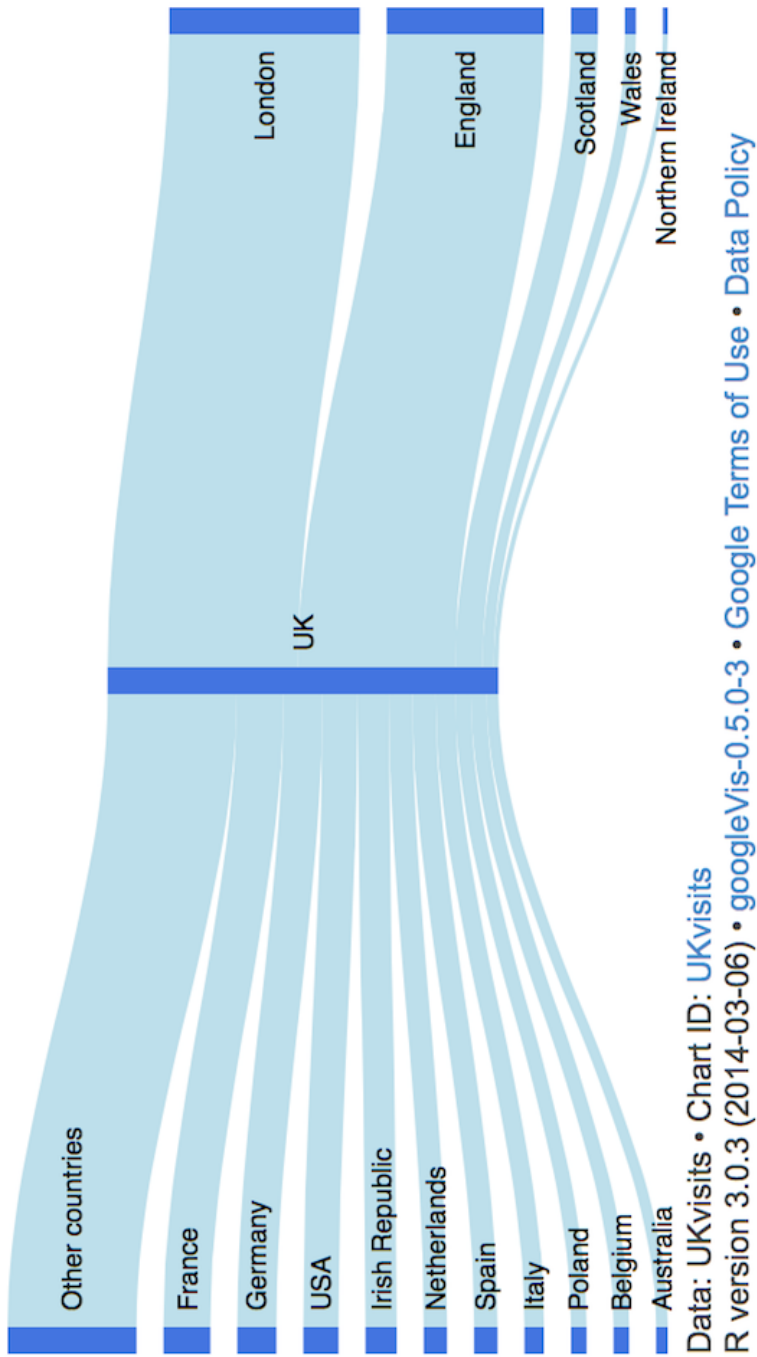
Home Prices in 20 Cities

By SHAN CARTER and KEVIN QUEALY [UPDATED June 24, 2014](#) | [RELATED ARTICLE](#)

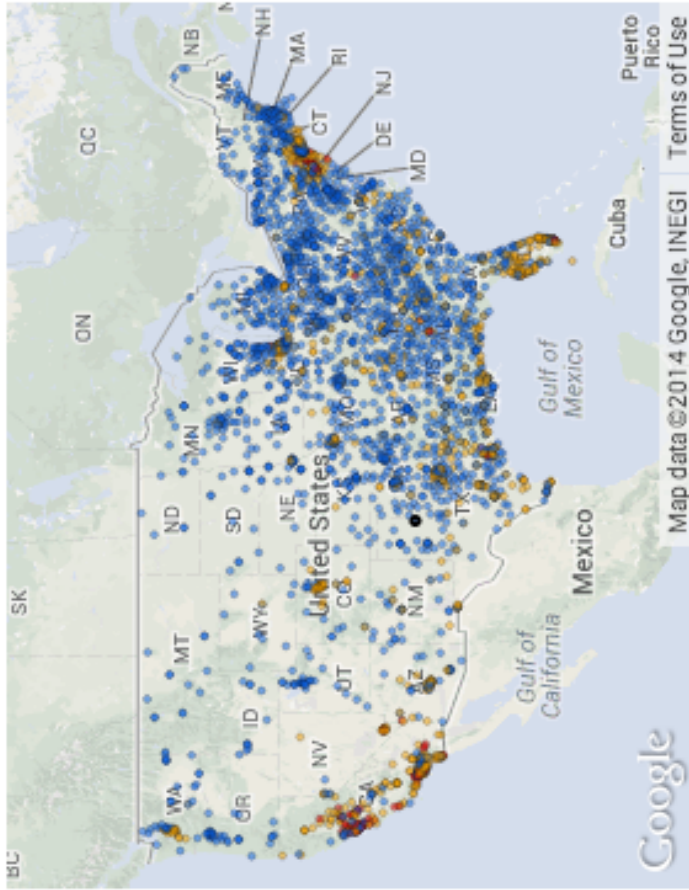
If you bought an average home in **Minnesota** around **May, 2006** it would be worth **19 percent less** today.



1. What variables constitute the frame?
2. What glyphs are used?
3. What are the aesthetics for those glyphs?
4. Which variable is mapped to each aesthetic?
5. Which variable, if any, is used for faceting?
6. Which scales are displayed with a guide?



1. What variables constitute the frame?
2. What glyphs are used?
3. What are the aesthetics for those glyphs?
4. Which variable is mapped to each aesthetic?
5. Which variable, if any, is used for faceting?
6. Which scales are displayed with a guide?



- Bills Medicare less than U.S. average
- Bills 1 to 2 times U.S. average
- Bills more than U.S. average
- Bills more than 2 times U.S. average

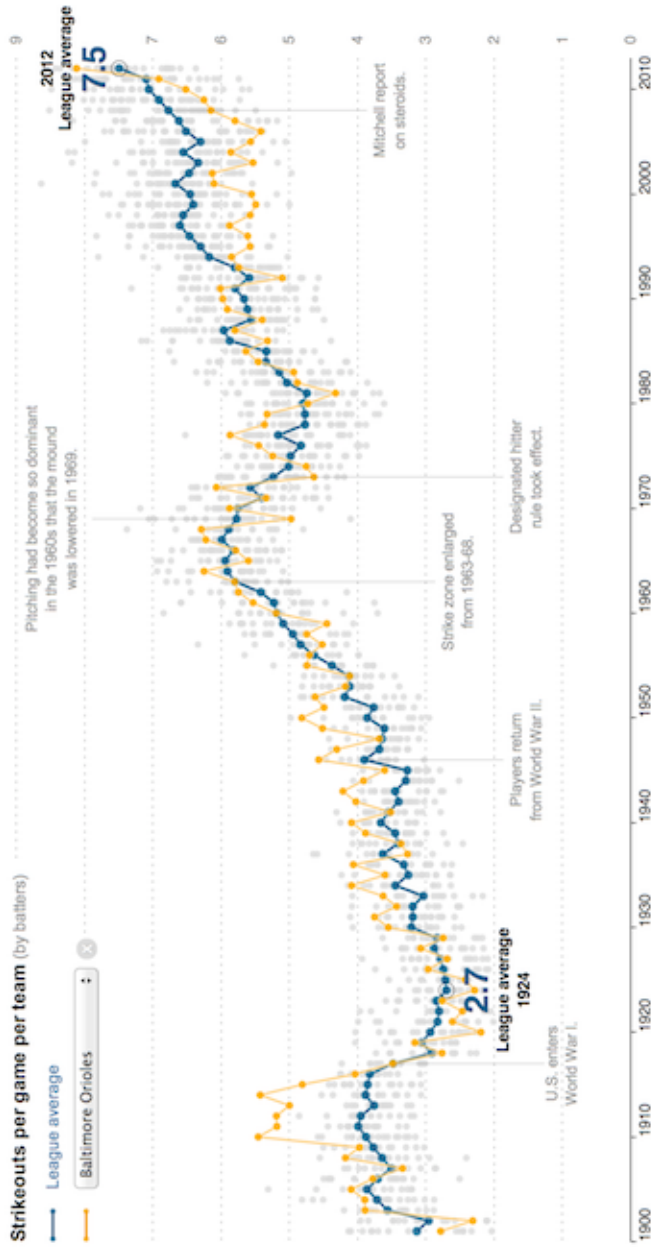
1. What variables constitute the frame?
2. What glyphs are used?
3. What are the aesthetics for those glyphs?
4. Which variable is mapped to each aesthetic?
5. Which variable, if any, is used for faceting?
6. Which scales are displayed with a guide?

Published: March 28, 2013

FACEBOOK TWITTER GOOGLE+ EMAIL SHW

Strikeouts on the Rise

There were more strikeouts in 2012 than at any other time in major league history.



1. What variables constitute the frame?
2. What glyphs are used?
3. What are the aesthetics for those glyphs?
4. Which variable is mapped to each aesthetic?
5. Which variable, if any, is used for faceting?
6. Which scales are displayed with a guide?

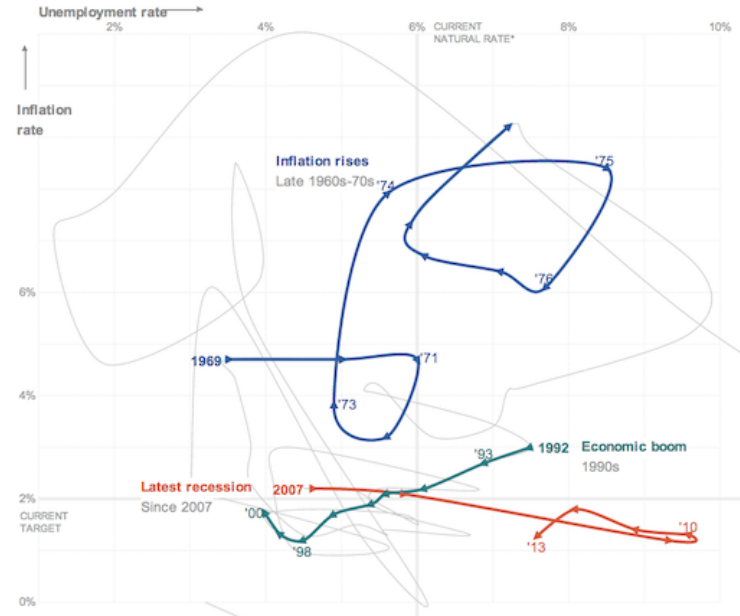
Janet L. Yellen, on the Economy's Twists and Turns

1 2 3 4 5 6 7
NEXT >

Inflation and unemployment

The Federal Reserve is said to have a "dual mandate": keeping inflation in check and the unemployment rate low. These measures, which tend to change cyclically and in concert with each other, are charted for every year since the Great Depression.

In speeches and in meetings, Ms. Yellen, the nominee for the next Fed leader, has commented on the Fed's actions during significant periods, providing a window into her views and priorities.



*The natural rate of unemployment is defined as the lowest sustainable level of unemployment over the long term. If the rate is pushed any lower than the natural level, wages and prices would rise.

By TOM GIRATIKANON and ALICIA PARLAPIANO

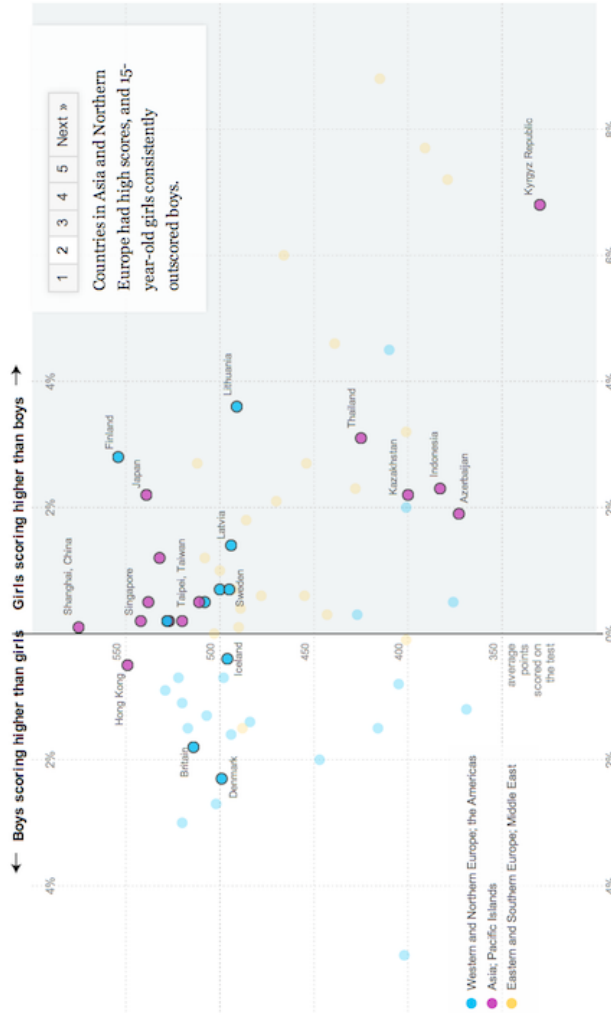
1. What variables constitute the frame?
2. What glyphs are used?
3. What are the aesthetics for those glyphs?
4. Which variable is mapped to each aesthetic?
5. Which variable, if any, is used for faceting?
6. Which scales are displayed with a guide?

UPDATED February 4, 2012

FACEBOOK TWITTER GOOGLE+ EMAIL SHARE

VISUALS

Girls Lead in Science Exam, but Not in the United States

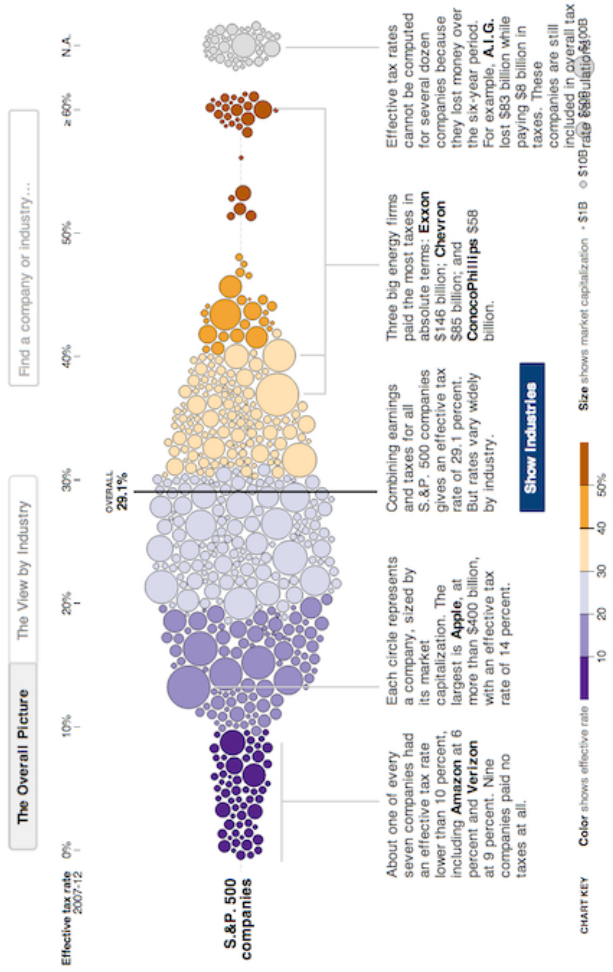


The exam, which is given every three years, was taken in 2009 by 470,000 students in 65 developed nations. The 2012 data will be available in December. China, Taiwan and the United Arab Emirates released data from a single city, not the whole country.

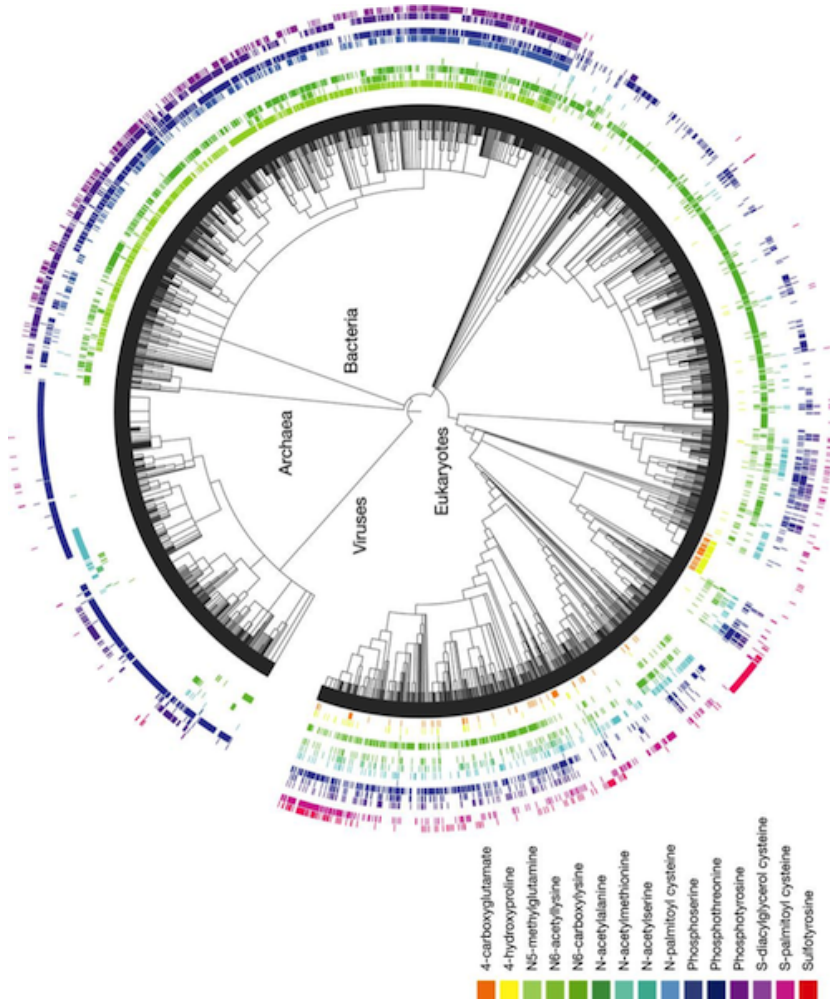
1. What variables constitute the frame?
2. What glyphs are used?
3. What are the aesthetics for those glyphs?
4. Which variable is mapped to each aesthetic?
5. Which variable, if any, is used for faceting?
6. Which scales are displayed with a guide?

Across U.S. Companies, Tax Rates Vary Greatly

Last week, in a Congressional hearing, Apple got grilled for its low-tax strategy. But not every business can copy that approach. Here is a look at what S&P 500 companies paid in corporate income taxes — federal, state, local and foreign — from 2007 to 2012, according to S&P Capital IQ. [Related Article »](#)



1. What variables constitute the frame?
2. What glyphs are used?
3. What are the aesthetics for those glyphs?
4. Which variable is mapped to each aesthetic?
5. Which variable, if any, is used for faceting?
6. Which scales are displayed with a guide?



1. What variables constitute the frame?
2. What glyphs are used?
3. What are the aesthetics for those glyphs?
4. Which variable is mapped to each aesthetic?
5. Which variable, if any, is used for faceting?
6. Which scales are displayed with a guide?